

Mardi 06 Février 2024

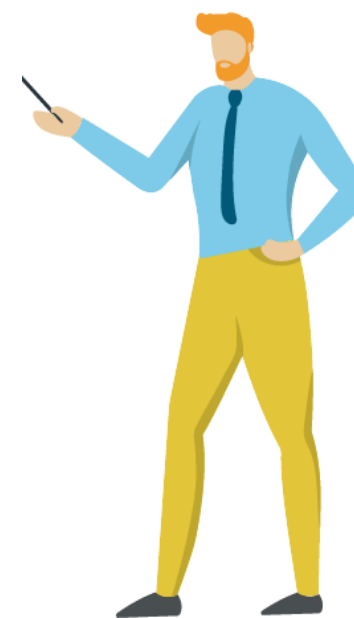
# Londres, les actions phares pour un air pur

*Interventions magistrales*

Intervention de :

**Alejandro COLSA PEREZ**

**Greater London Authority (ville de Londres),  
Responsable de la qualité de l'air à la Direction générale  
de l'agglomération londonienne**



Mardi 06 Février 2024

# A breath of change: London's inspiring action for clean air



Alejandro Colsa Perez  
Head of Air Quality  
Greater London Authority

## City-led action = Impact

- Changes since 2016
- Key pillars of success
- Delivering the Ultra Low Emission Zone
- Challenges ahead

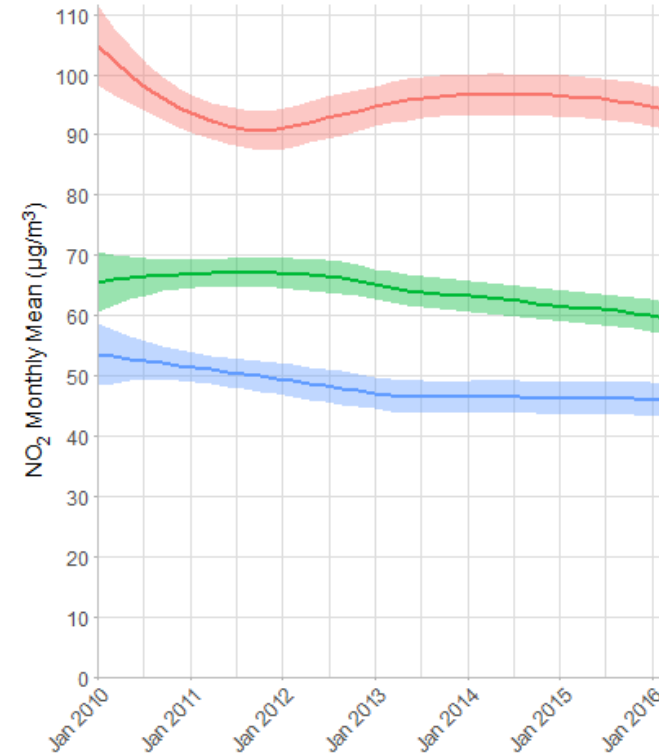


# Clear need for action

- +9m people (+13% UK's population)
- Air pollution = around 4,000 premature deaths a year
- +500,000 Londoners live with asthma
- 7% of all asthma admissions in children exacerbated by air pollution
- £10.4bn cost to NHS and social care by 2050

Trends in NO<sub>2</sub> in London

Roadside Sites



London Zone ■ Central ■ Inner ■ Outer

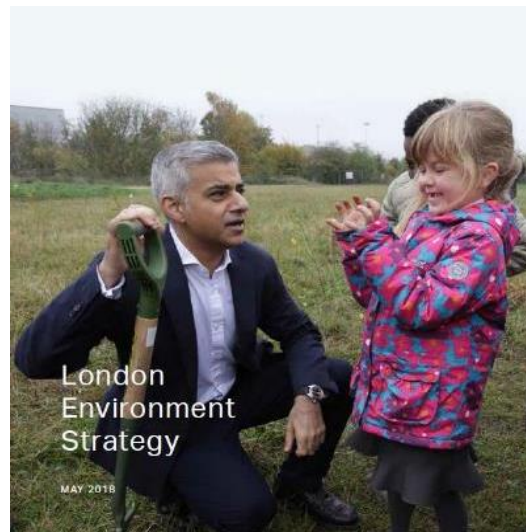
Monthly average NO<sub>2</sub> roadside concentrations in London from 2010 to 2023

## Maximising powers



- Transport emissions
- Planning
- Statutory duties to direct boroughs (local authorities)

## Clear mandate



- Clear direction of travel
- Ambitious but achievable
- Relevant to people (public health at heart)

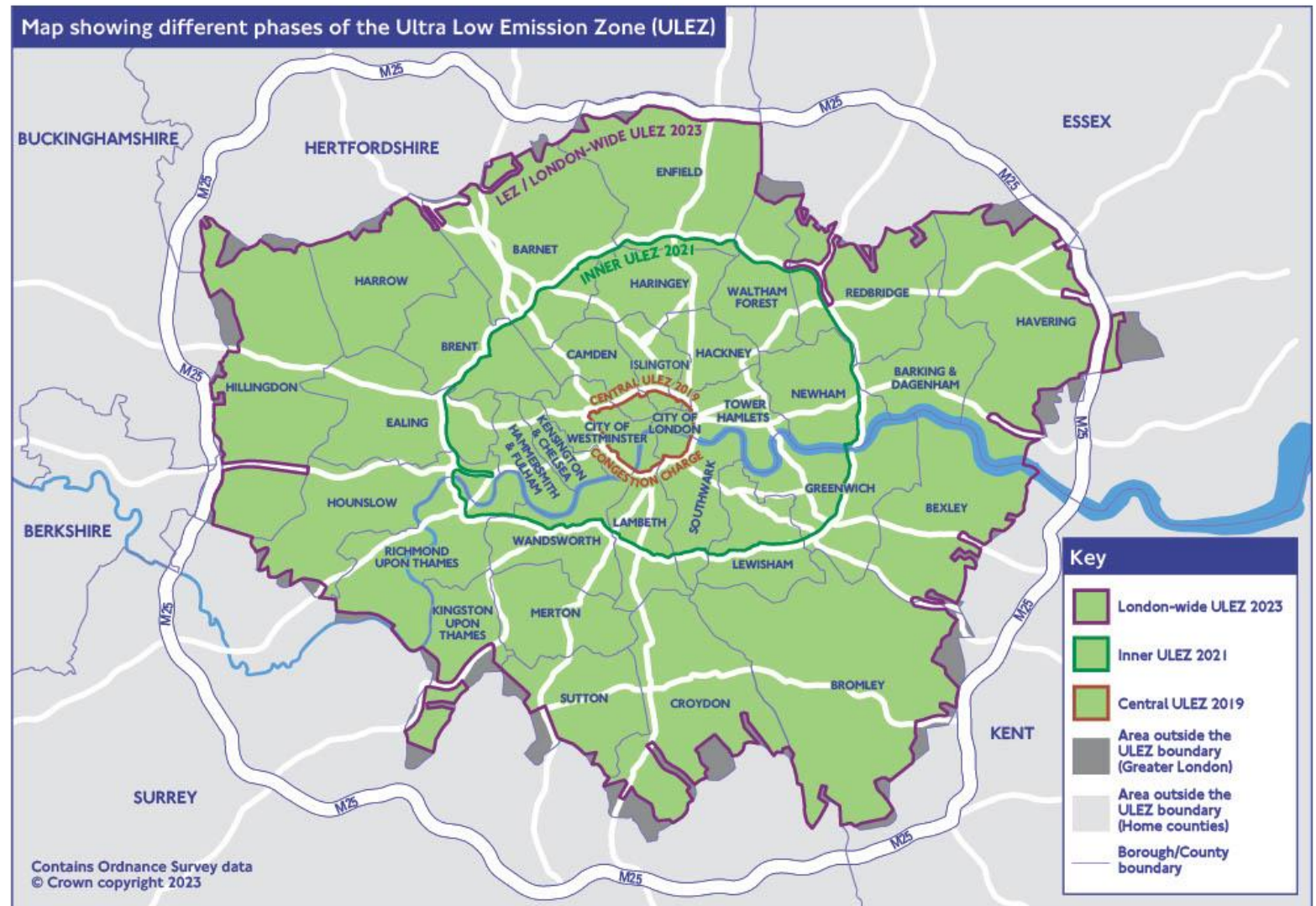
## Strong partnerships



- Strong evidence base
- Proactive stakeholder engagement
- Empowering communities

# London's Ultra Low Emission Zone (ULEZ)

– the largest clean air zone of its kind



# Key elements of success

Case for action

Proactive stakeholder engagement plan

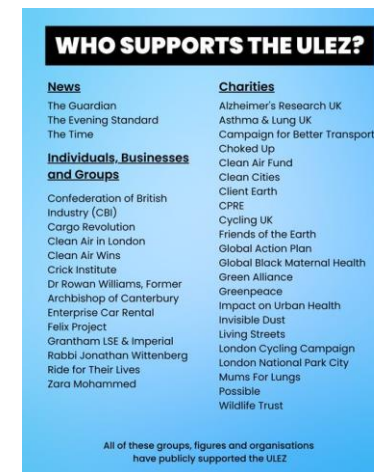
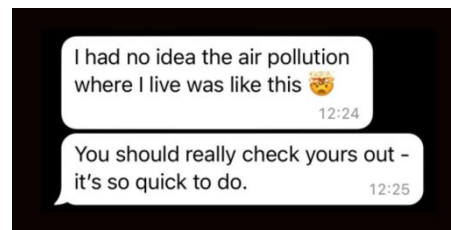
Extensive multi-channel marketing campaign

Research and opinion polling to inform messaging



Your options for the Ultra Low Emission Zone

A guide to the Mayor of London's scrappage scheme and support available if your vehicle does not meet the ULEZ standards



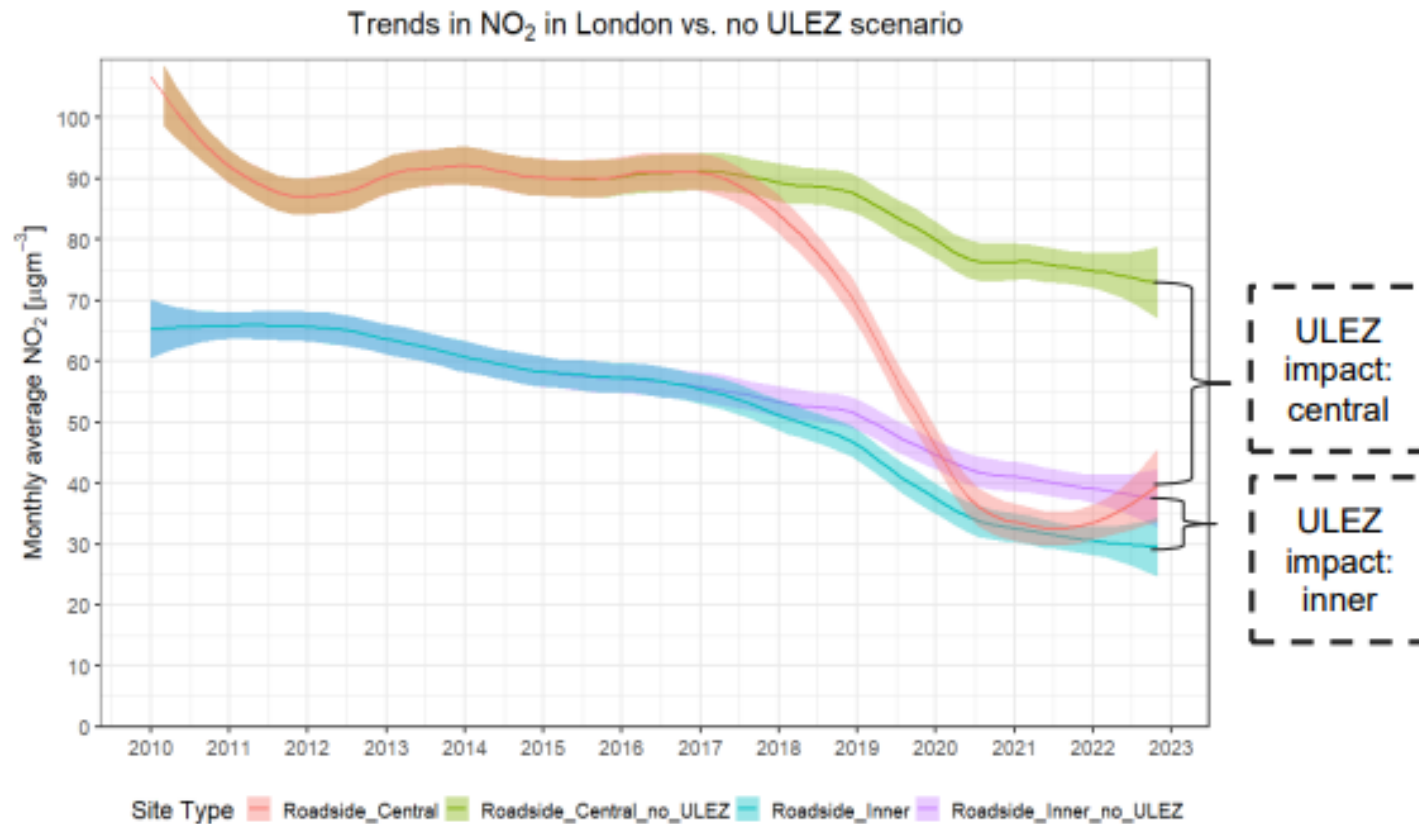
Scrappage schemes

Transport alternatives (public transport & active travel)

Electric vehicle infrastructure investment

Supportive & influential partner organisations

# ULEZ approach works and its impacts are rapid



**74,000**

fewer non-compliant vehicles seen in the central and inner zone on an average day (-60%)

**47,000**

fewer unique vehicles seen in the central and inner zone on an average day (-5%)

NO<sub>2</sub> levels **46% lower in central London** and **21% lower in inner London** compared to no-ULEZ scenario



# London's wider AQ programme



Breathe London network



Cleaner bus fleet



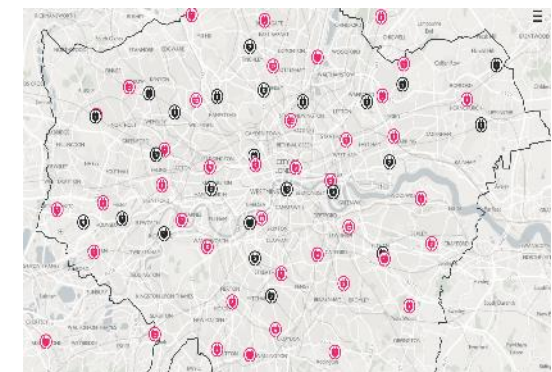
Zero emission capable taxis



Mayor's air quality alerts



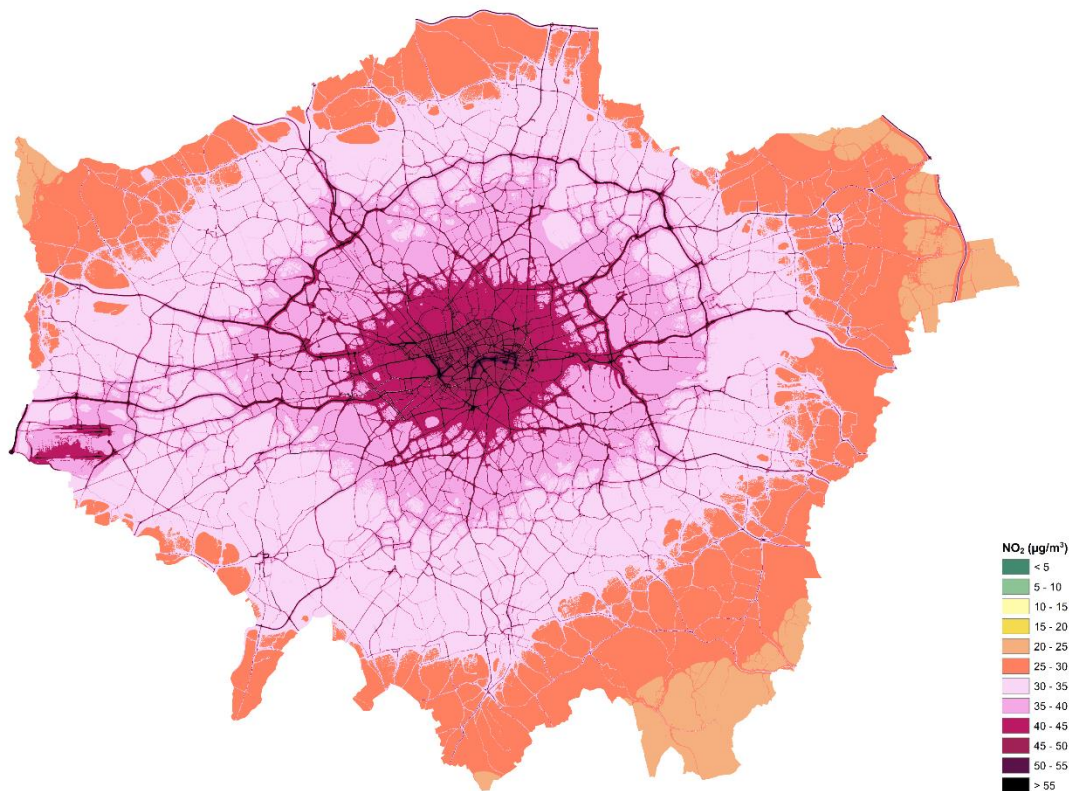
Investment in walking and cycling



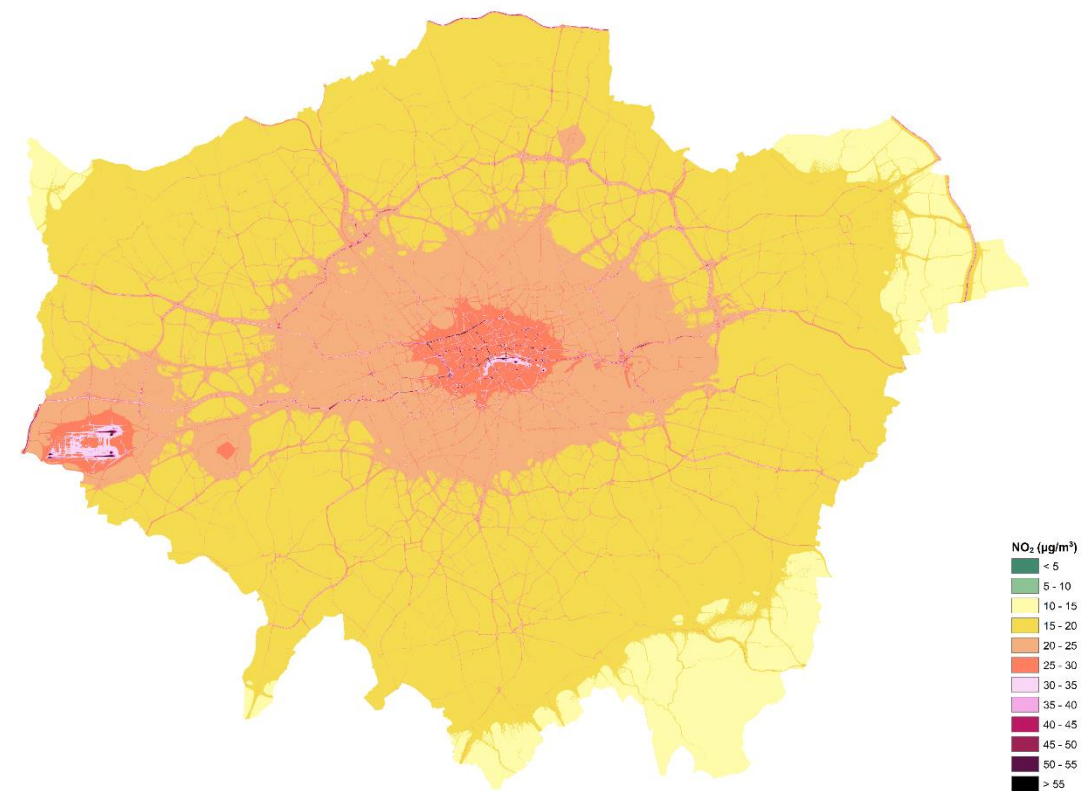
Electric vehicle charging infrastructure

# London Atmospheric Emissions Inventory (LAEI)

2016



2025 (forecast)



## Opportunities for city-led action

- Innovative hubs
- Strong community networks
- Models for other urban areas

